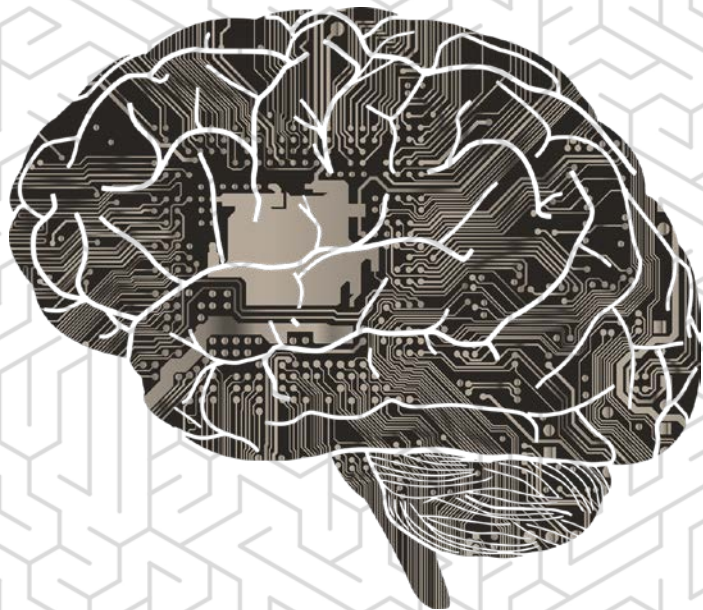




what if.

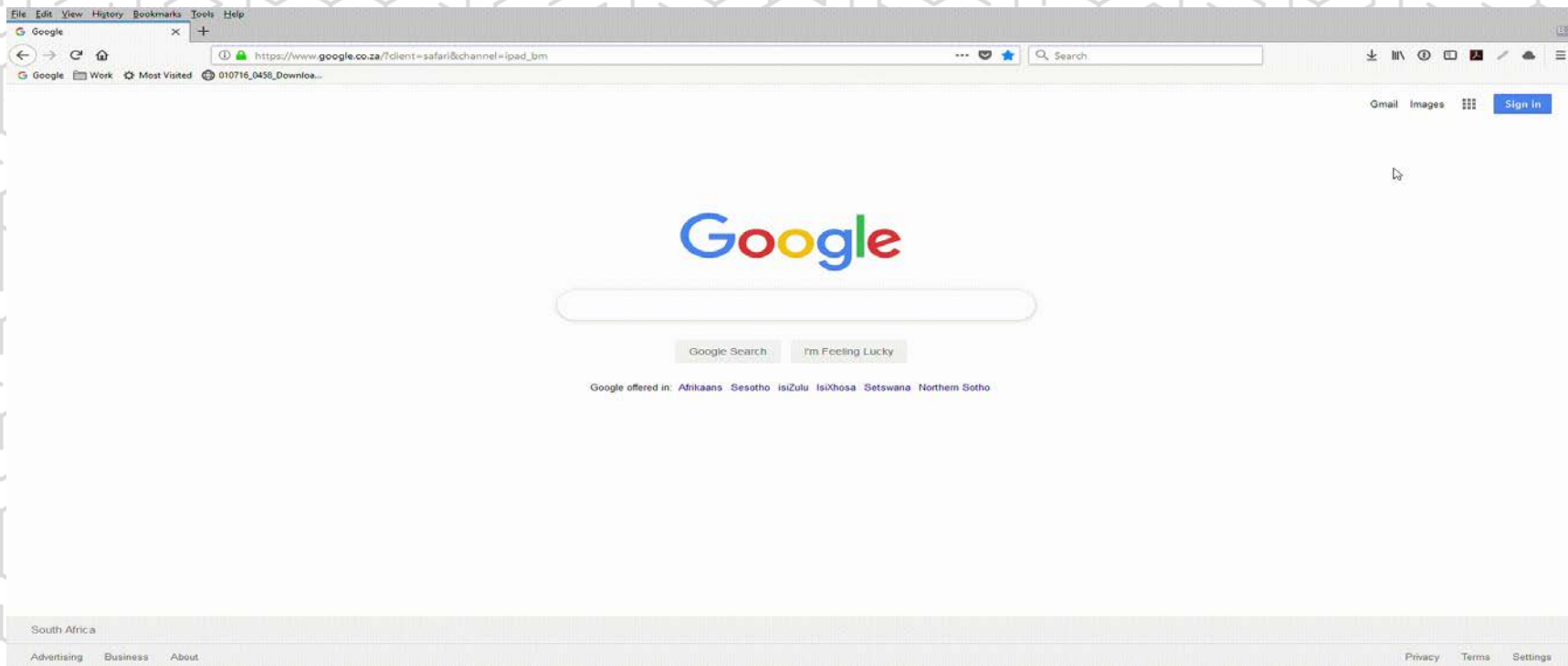
**... AI made data
more accessible**

AI



Making data more accessible





Traditional programming

Data

Program



Computation



Results

	A	B	C	D	E	F	G
1							
2		Data Cell	150				
3							
4		Condition 1	100	>=			
5		Condition 2	999	<=			
6		Result if true	100				
7		Result if false	0				
8							
9		Live Formula	=IF(AND(C2>=C4,C2<=C5),C6,C7)				
10							
11							

	A	B	C	D	E	F	G
1							
2		Data Cell	150				
3							
4		Condition 1	100	>=			
5		Condition 2	999	<=			
6		Result if true	100				
7		Result if false	0				
8							
9		Live Formula	=IF(AND(C2>=C4,C2<=C5),C6,C7)				
10							
11							

Machine learning

Data

Program



Computation



Results



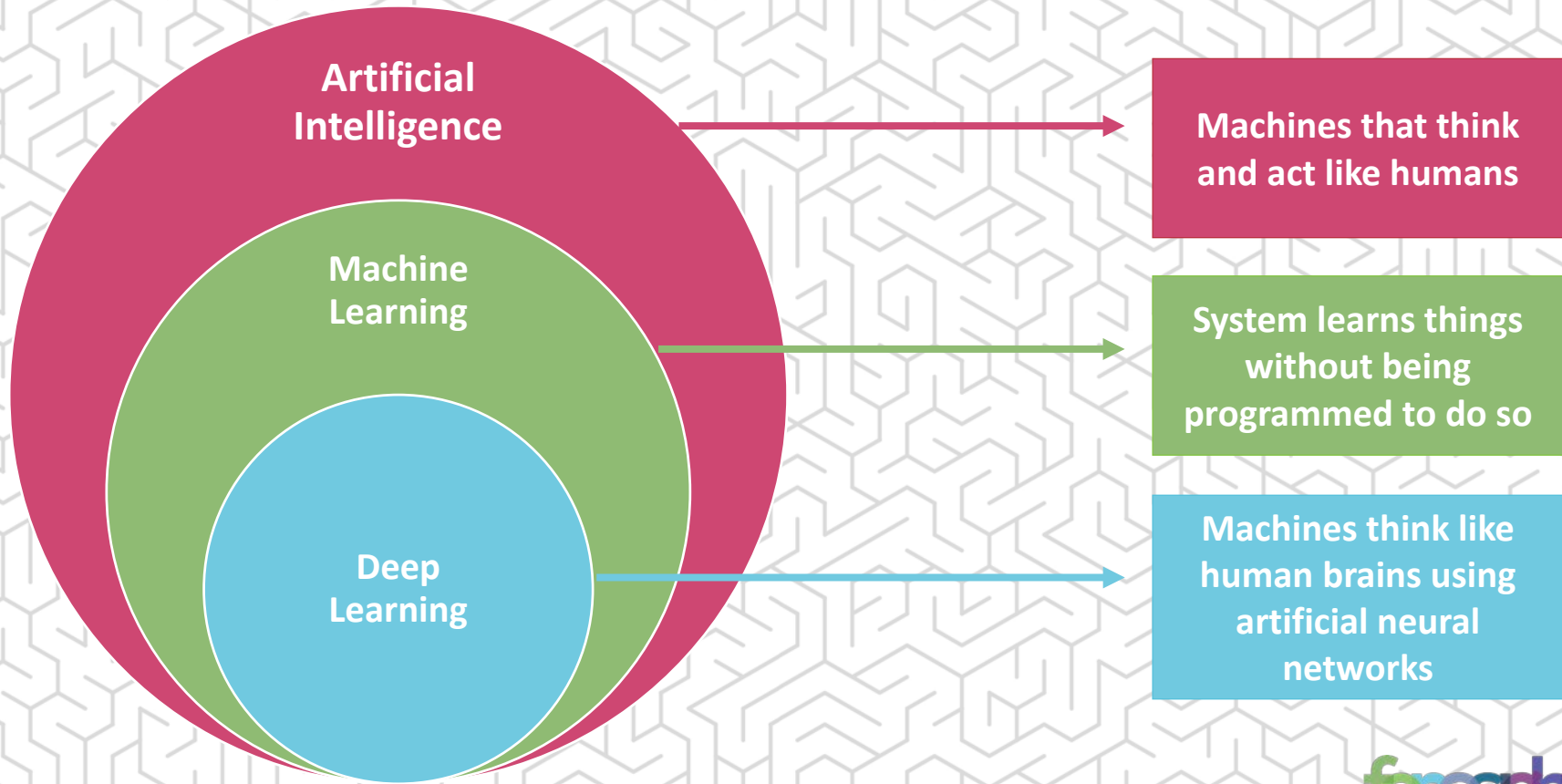
face

not a
face

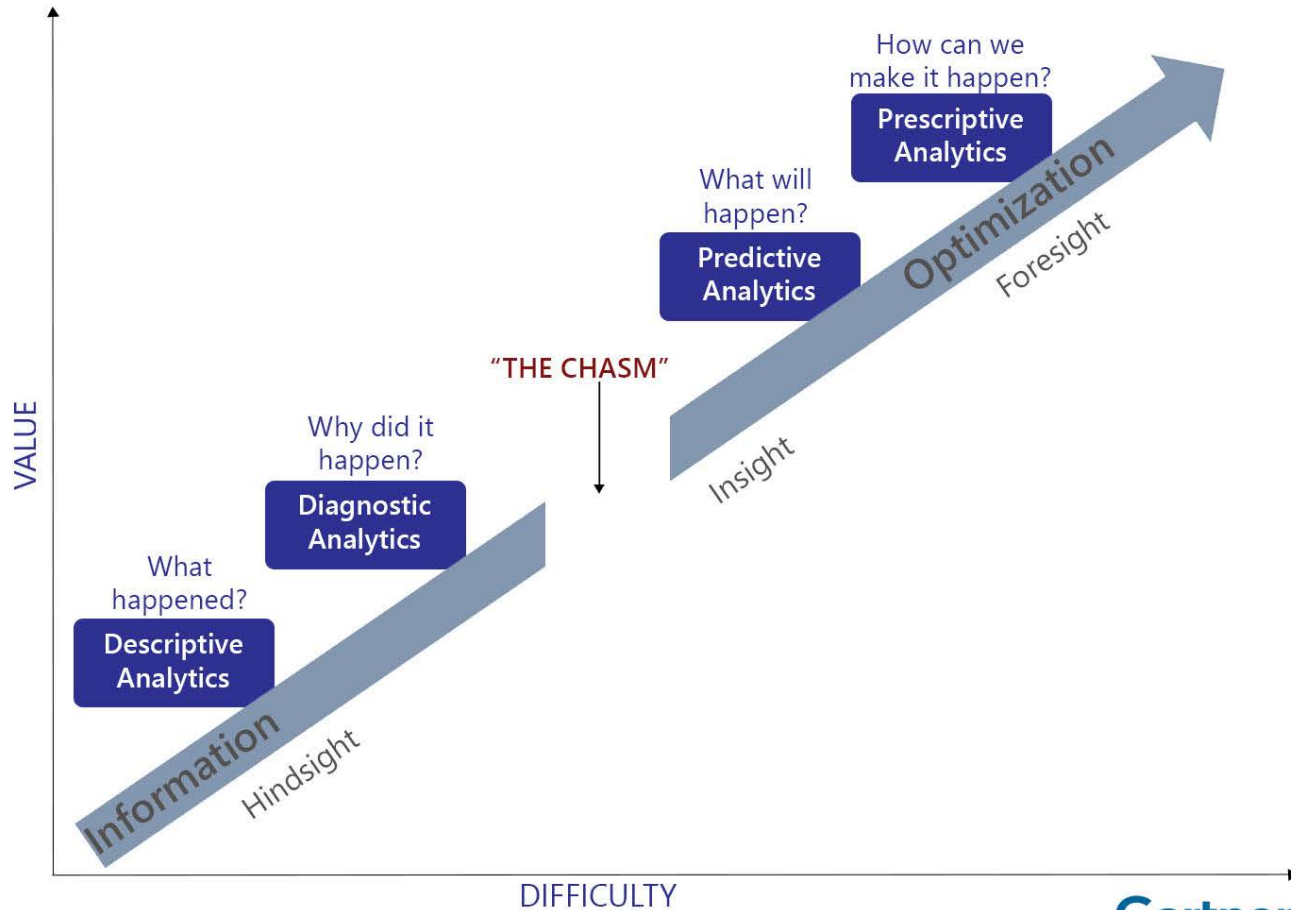
face



facial recognition



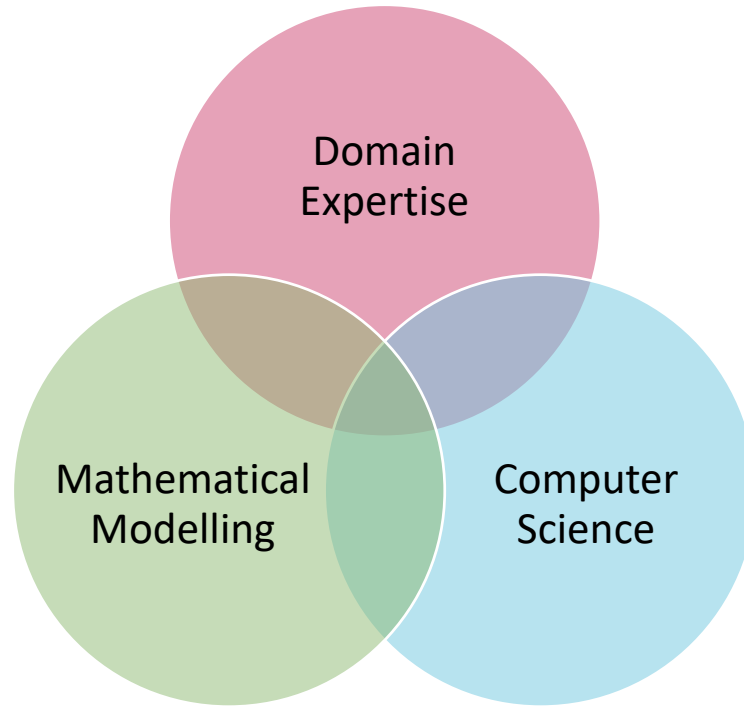
Analytic Value Escalator



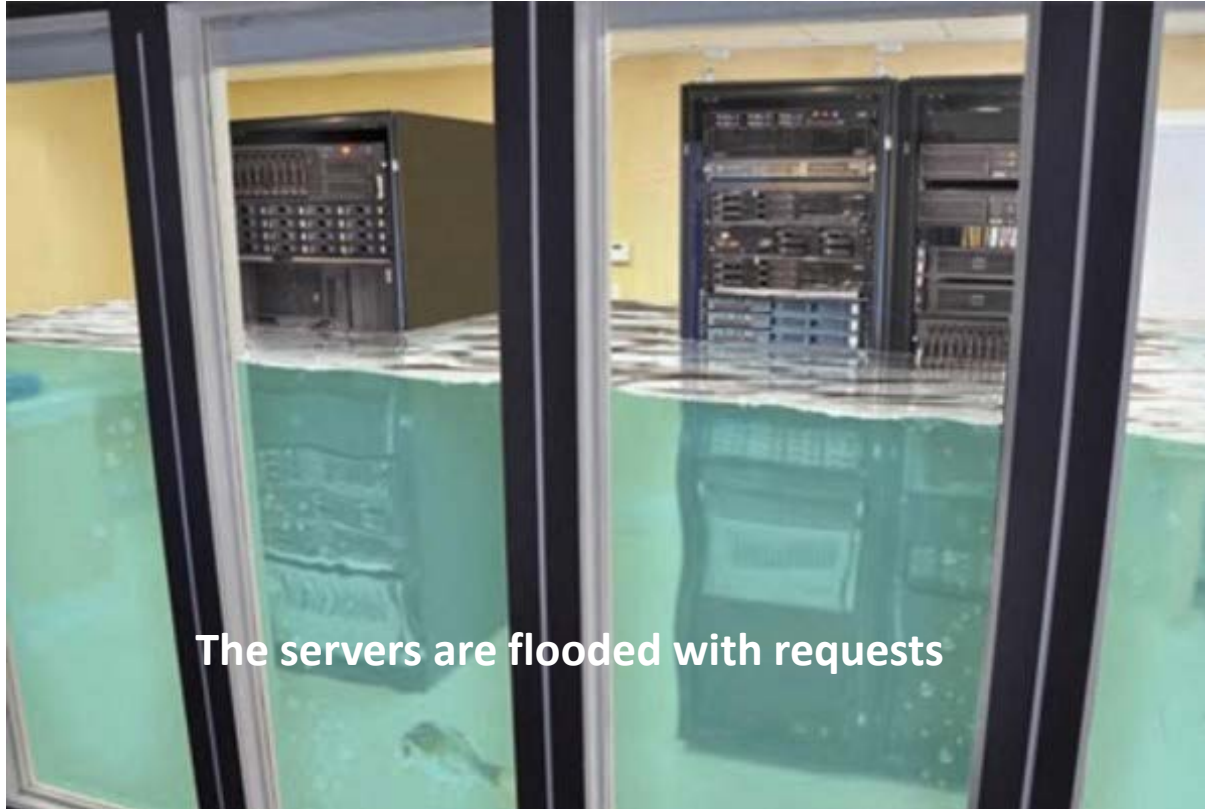


Why the chasm?

Expertise



Inflexible infrastructure



The servers are flooded with requests

Inflexible infrastructure



Google Cloud

Data accessibility





**“talk is cheap,
show me the code”**

Linus Torvalds



thank you.

a different
perspective

foresight
dialogues 2019