

REIMAGINE. RETHINK. REBUILD.

How patient-reported data is driving
value-based healthcare funding
DOWN UNDER



insight

foresight
dialogues 2021

VALUE PERSPECTIVE.

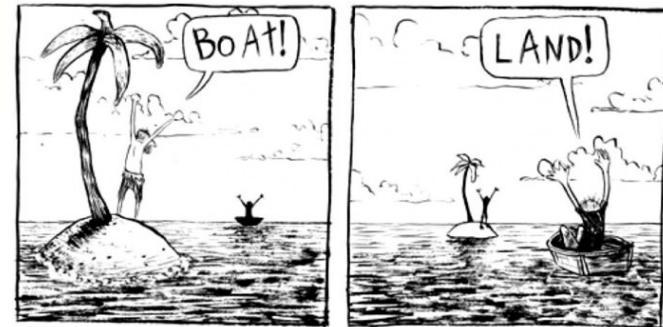
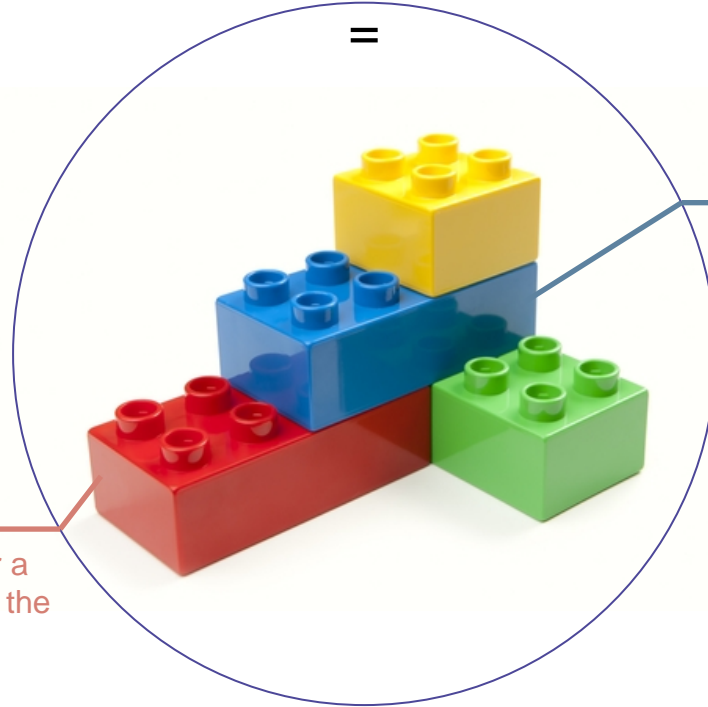
VALUE
=

OUTCOMES

“health results that matter for a patient’s condition, over the care cycle”

COST

“total costs of care for a patient’s condition over the care cycle”



AUSTRALIAN CONTEXT.



Both Medicare and PHI products can still leave some patients with out-of-pocket costs.



Private Health Insurance (PHI) offer top-up cover for nearly half of the Australian population. PHI mainly cover elective hospital procedures and auxiliary services.



Medicare is Australia's universal health care scheme that cover medical services, medicines and major medical treatment through the public hospital system.

TRADITIONAL CONTRACTING.



Volume, and ...



Claims &
Costing
Data



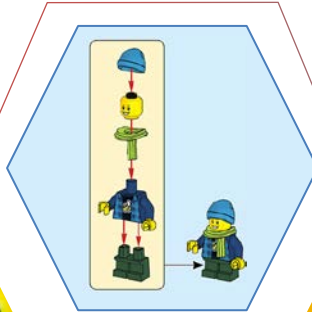
HACS &
Adverse
Events

VALUE-BASED FUNDING BUILDING BLOCKS.

Value-based
perspective



Patient
Experiences



Patient
Outcomes



HACS &
Adverse
Events

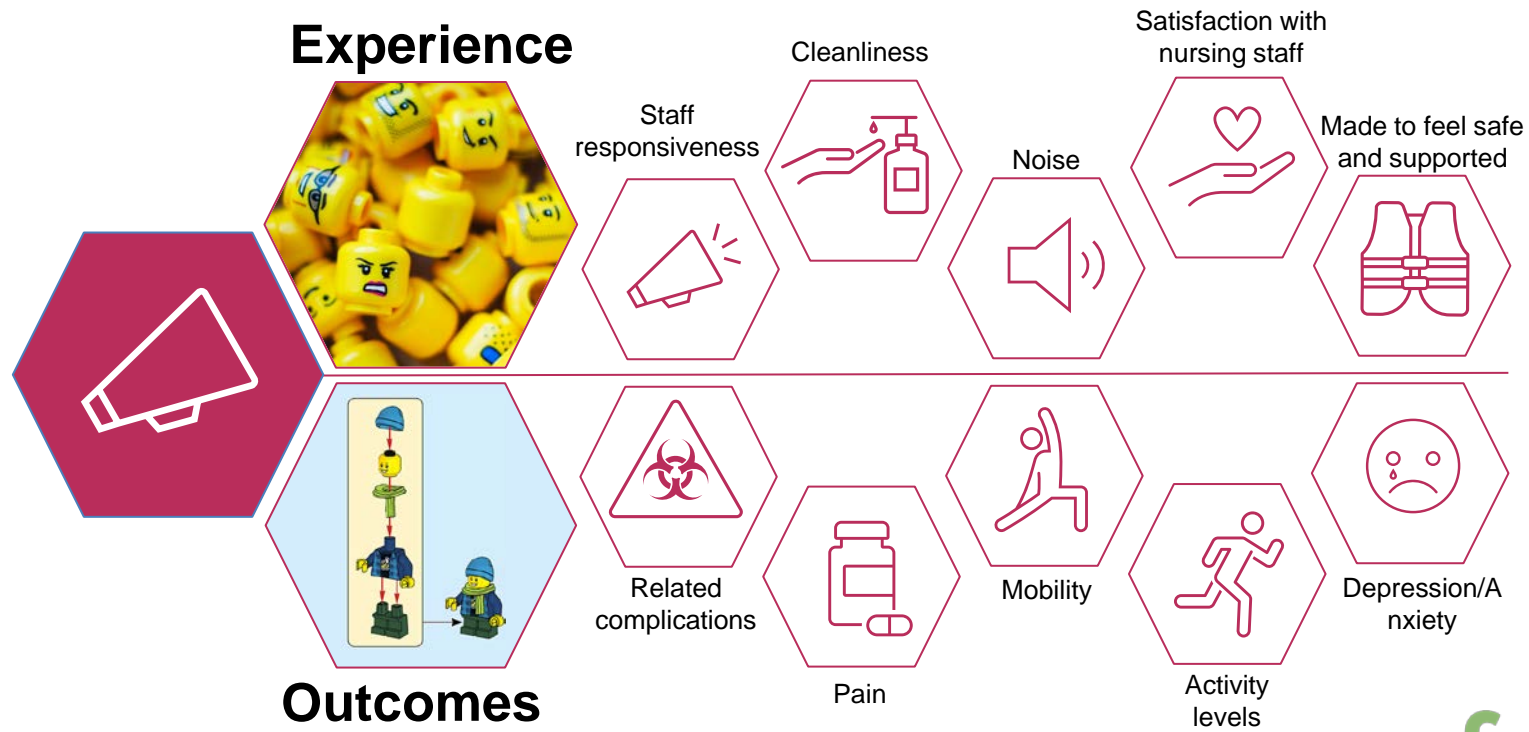


Claims &
Costing
Data



Relative
Performance

PATIENT REPORTED DATA.



PATIENT REPORTED DATA IS...DATA.

PRO



Patient Reported Outcomes

Information on the patient,
told by the patient without
interpretation

Eg Symptom - Depression

PROM



Patient Reported Outcomes Measure

Instrument or tool used to collect and
measure information from the patient

Eg PHQ-9

PRO-PM

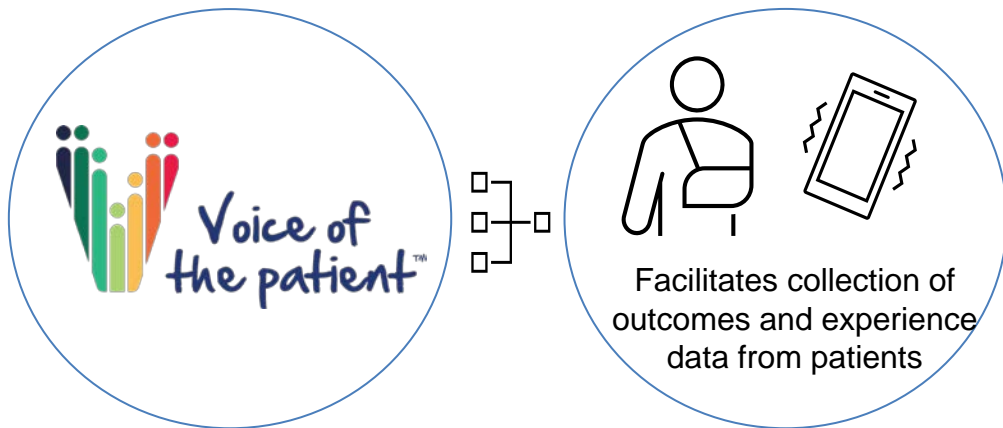


Patient Reported Outcomes based performance measure

Aggregating information from patients
in a reliable way to quantify
performance

Eg PHQ-9 score above 9 improving to
< 5 at 6 month follow-up

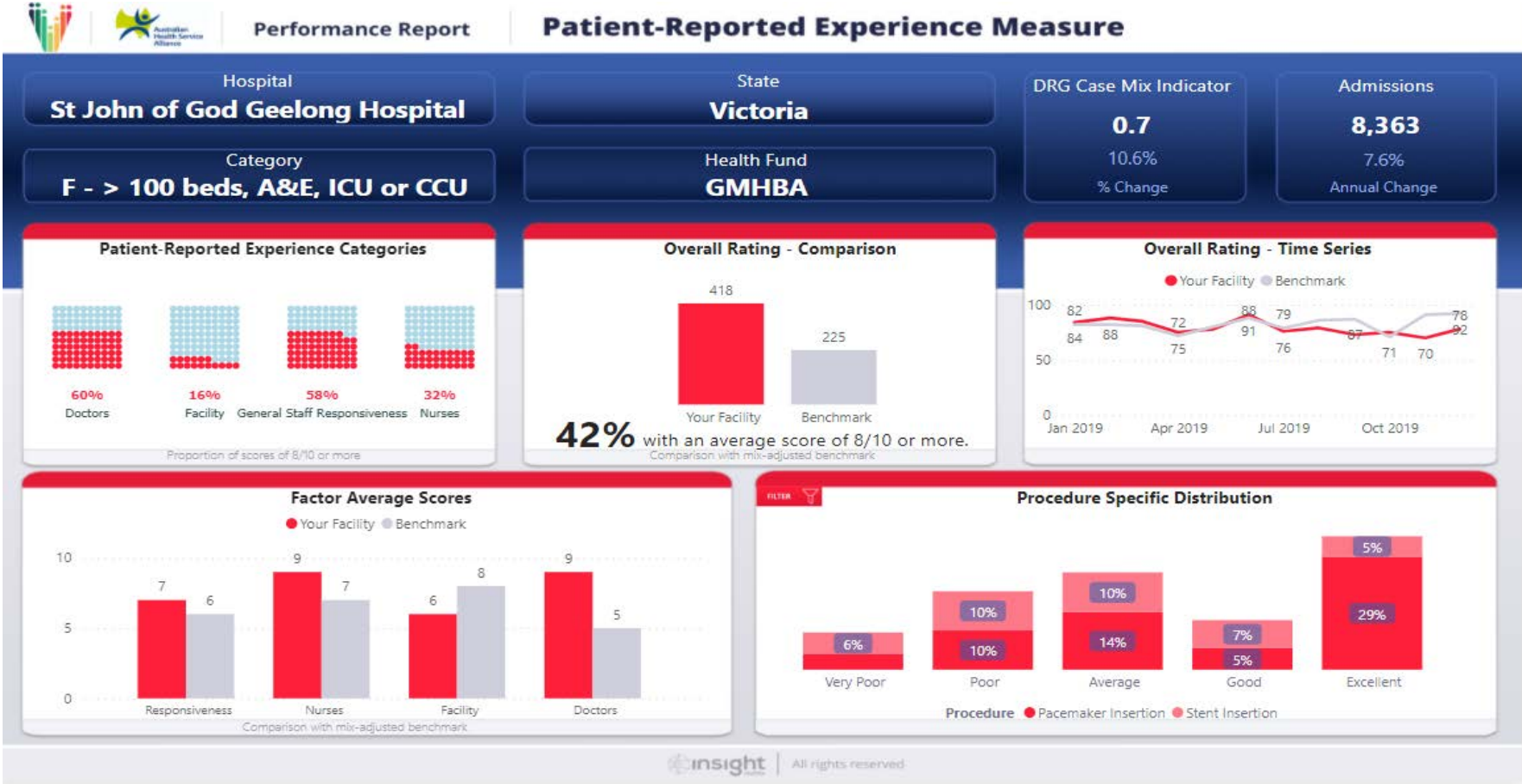
MEASURING WHAT MATTERS.



Patients are at the center of healthcare, without patients we cannot create healthcare
New scientific methods and technology give us an opportunity to measure what really matters to patients

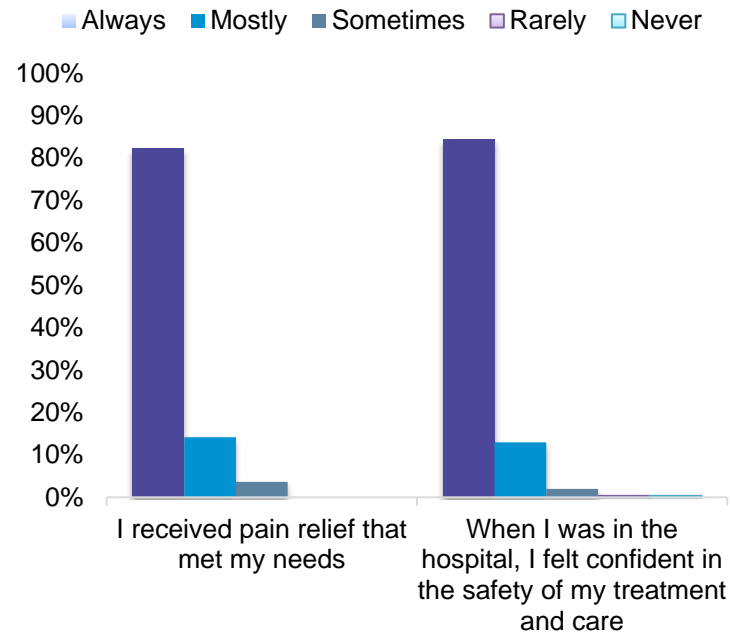
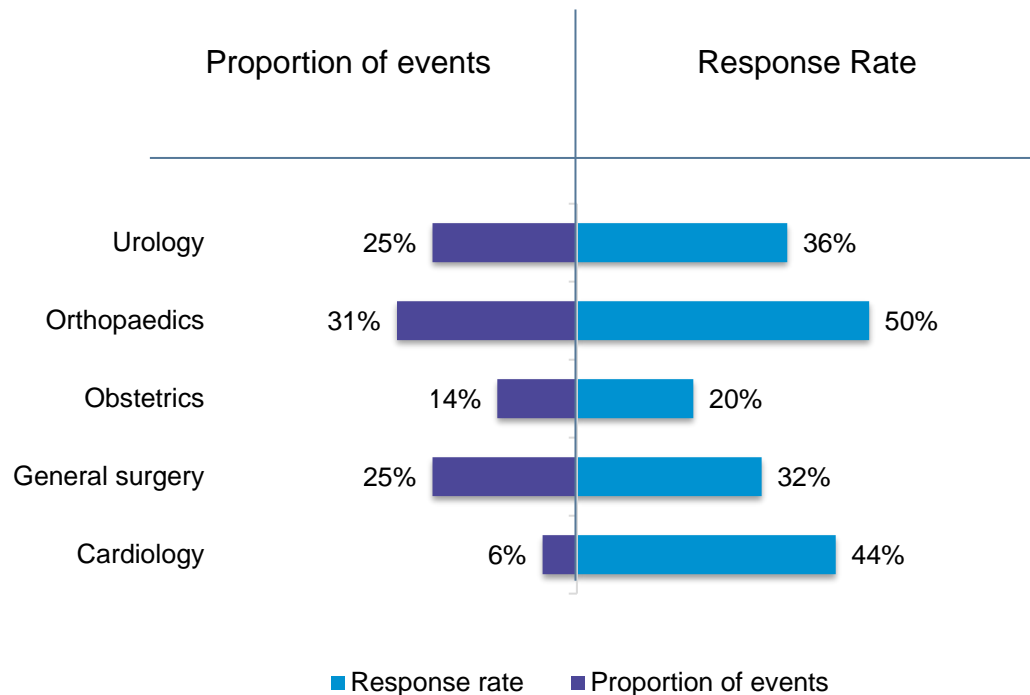


PATIENT REPORTED DATA VISUALIZED.

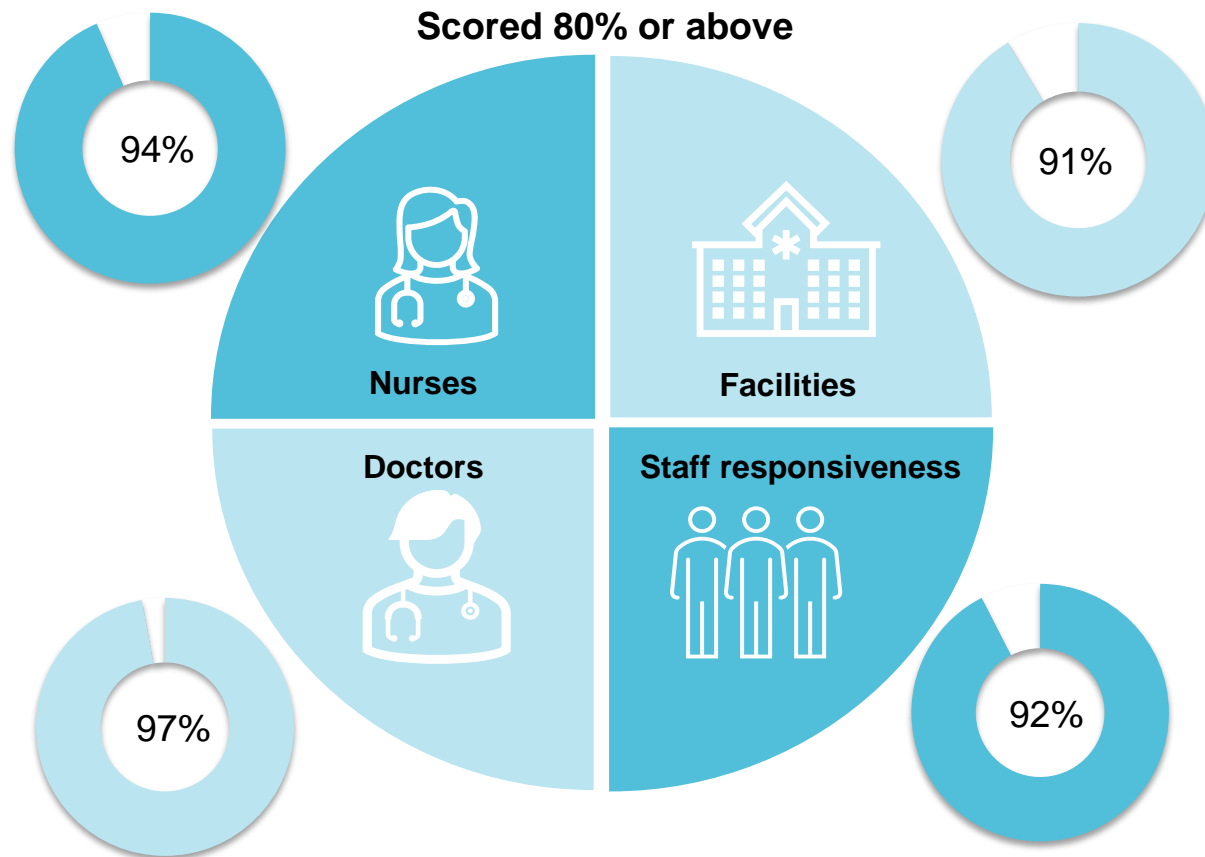


 All rights reserved

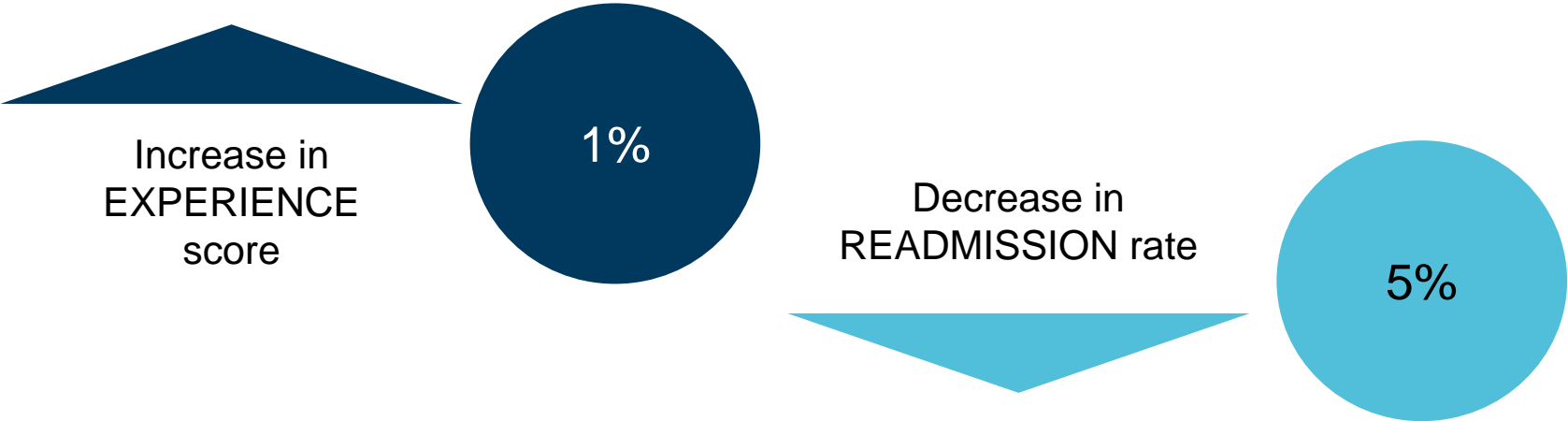
RESPONSES.



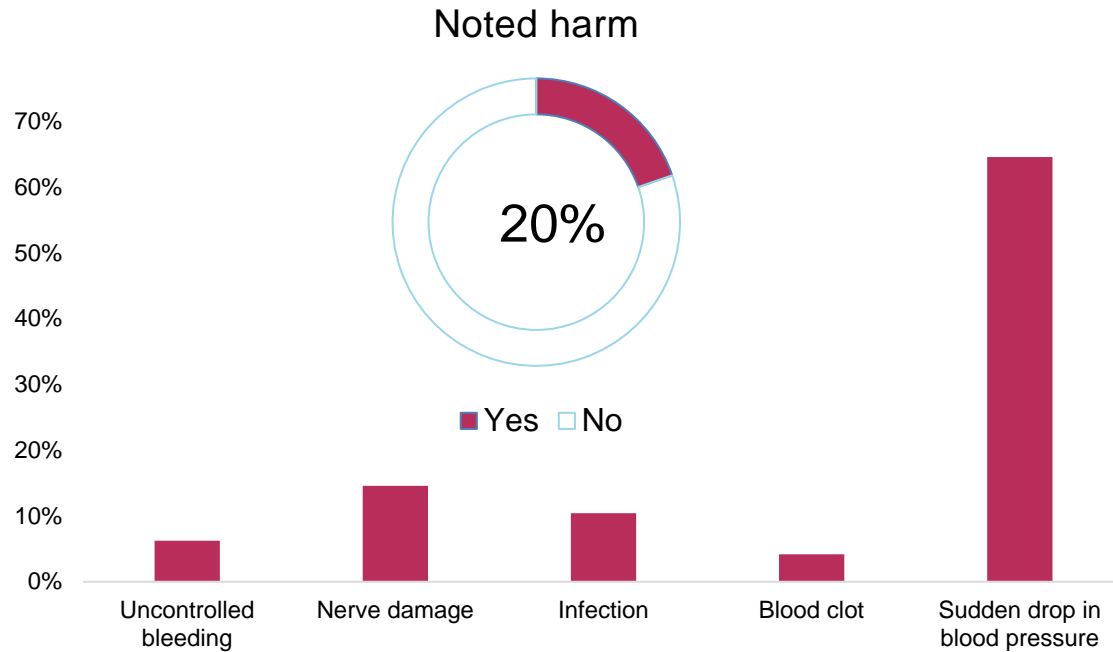
PATIENT REPORTED DATA IS POSITIVELY SKEWED.



EVIDENCE OF RELATIVE IMPROVEMENT.



ADVERSE EVENTS



HOSPITAL ACQUIRED COMPLICATIONS (HACS).





THANK YOU.

Foresight 2021
17.05.21



insight

foresight
dialogues 2021